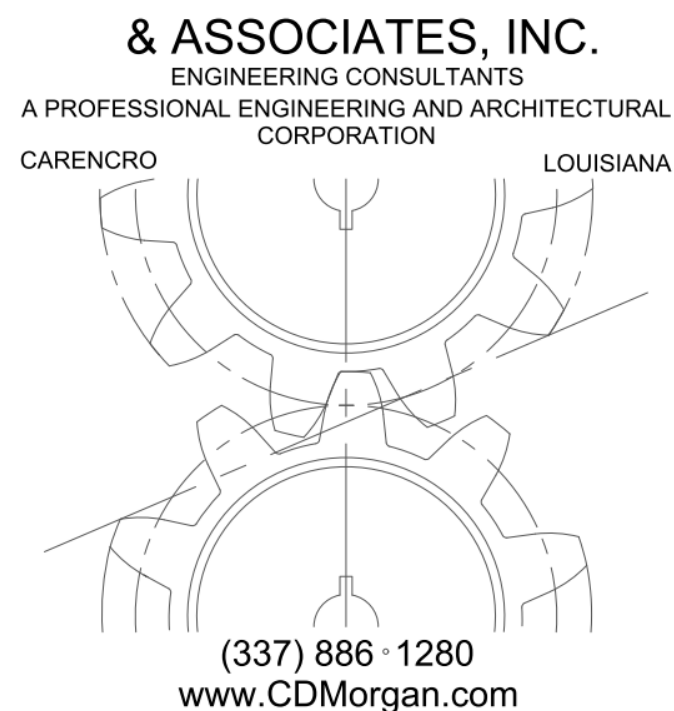


# OFFICE of the STATE PUBLIC DEFENDER DISTRICT 8 OFFICE BUILDING

111 West Main Street  
WINNFIELD, LOUISIANA 71483

CDMorgan



## Index to Drawings

A0.1	Title Sheet	Architecture
A0.2	Project Standards	Architecture
A0.3	Partition Types	Architecture
A0.4	Schedules	Architecture
A0.5	Openings	Architecture
A0.6	Openings	Architecture
A0.7	UL Listings	Architecture
A0.8	UL Listings	Architecture
A2.1	First Floor Plan	Architecture
A2.2	Second Floor Plan	Architecture
A2.3	Reflected Ceiling Plans	Architecture
A2.4	Roof Plan	Architecture
A3.1	Building Exterior Elevations	Architecture
A5.1	Interior Elevations	Architecture
A5.2	Interior Elevation	Architecture
M1	First Floor HVAC Plan	Mechanical
M2	Second Floor HVAC Plan	Mechanical
M3	Mechanical Details	Mechanical
M4	Mechanical Details	Mechanical
M5	Mechanical Details	Mechanical
M6	Mechanical Schedules	Mechanical
P1	First Floor Sanitary Sewer Plan	Mechanical
P2	Second Floor Sanitary Sewer Plan	Mechanical
P3	Domestic Water Plan	Mechanical
P4	Plumbing Riser Diagram	Mechanical
P5	Plumbing Fixture Schedule	Mechanical
E1	Symbol Schedule	Electrical
E1.1	Schedules and Notes	Electrical
E2.0	Demo Plans	Electrical
E3.0	1st Floor Electrical Plan	Electrical
E3.1	1st Floor Lighting Plan	Electrical
E3.2	1st Floor Mechanical Connections Plan	Electrical
E4.0	2nd Floor Electrical Plan	Electrical
E4.1	2nd Floor Lighting Plan	Electrical
E4.2	2nd Floor Mechanical Connections Plan	Electrical
E5.0	Electrical Riser Diagram	Electrical
E5.1	Panel Schedule	Electrical

## Project Directory

### PROJECT CONTACT PERSON(S)

#### OWNER

WINN PARISH PUBLIC DEFENDER'S OFFICE  
CONTACT: CHRIS BOWMAN  
116 W MAIN STREET  
WINNFIELD, LOUISIANA 71483  
PHONE: (318) 628-5080

### OWNER'S CONSTRUCTION REPRESENTATIVE

CD MORGAN & ASSOCIATES, INC  
CONTACT: JEFF AUGUSTINE  
602 HECTOR CONNOLY RD  
CARENCRO, LA 70520  
PH: (337) 886-1280 (O)

### ARCHITECT

CD MORGAN & ASSOCIATES, INC  
CONTACT: JEFF AUGUSTINE  
602 HECTOR CONNOLY RD  
CARENCRO, LA 70520  
PH: (337) 886-1280 (O)

### MECHANICAL ENGINEER

CD MORGAN & ASSOCIATES, INC  
CONTACT: CHRIS MORGAN  
602 HECTOR CONNOLY RD  
CARENCRO, LA 70520  
PH: (337) 886-1280 (O)

### ELECTRICAL ENGINEER

RME CONSULTANTS, LLC  
CONTACT: RYAN MOORE  
5713 SUPERIOR DR  
BATON ROUGE, LA 70816  
PH: (225) 936-0816 (C)

## Project Data

### ZONING

CITY OF WINNFIELD - WITHIN CITY LIMITS  
ZONING: COMMERCIAL DISTRICT, GENERAL

### APPLICABLE CODES

NATIONAL ELECTRIC CODE - NFPA 70, 2020 ED.  
INTERNATIONAL BUILDING CODE (IBC), 2021 ED.  
STANDARD TYPES OF BUILDING CONSTRUCTION - NFPA 220, LATEST ED.  
INTERNATIONAL MECHANICAL CODE, 2021 ED.  
INTERNATIONAL PLUMBING CODE, 2021 WITH AMENDMENTS  
LIFE SAFETY CODE (LSC) - NFPA 101, 2015 EDITION

### OCCUPANCY CLASSIFICATION

BUSINESS (IBC/NFPA)

### CONSTRUCTION TYPES

IBC - V NON SPRINKLED  
NFPA V (000)

### BUILDING HEIGHT

ALLOWED 40 FT  
PROVIDED 30 FT

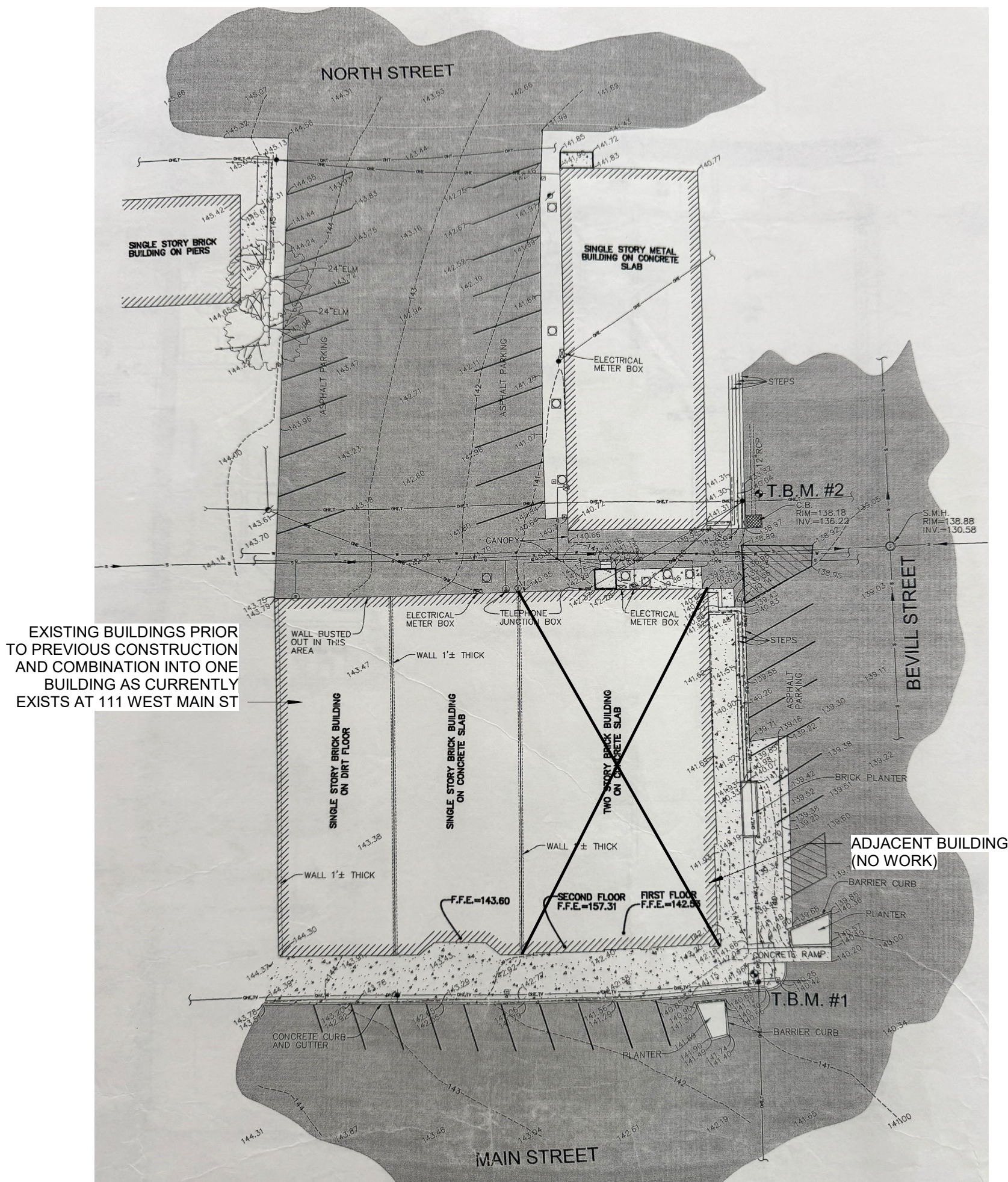
### BUILDING AREA

ALLOWED 9,500 SF/FLR  
PROVIDED 6,800 SF/FLR (AREA MODS NOT APPLIED  
NEEDED AS PER IBC ALLOWANCES)

### EXIT EGRESS - BUSINESS

COMMON PATH OF TRAVEL 100 FT  
DEAD END CORRIDOR 50 FT  
MAX TRAVEL DISTANCE 300 FT

## Site Plan - NTS



## Vicinity Map



Schematic Design - Not for Construction

Office of the State Public Defender District 8 Office Building

111 West Main Street, Winnfield, LA 71483

May 15, 2026

